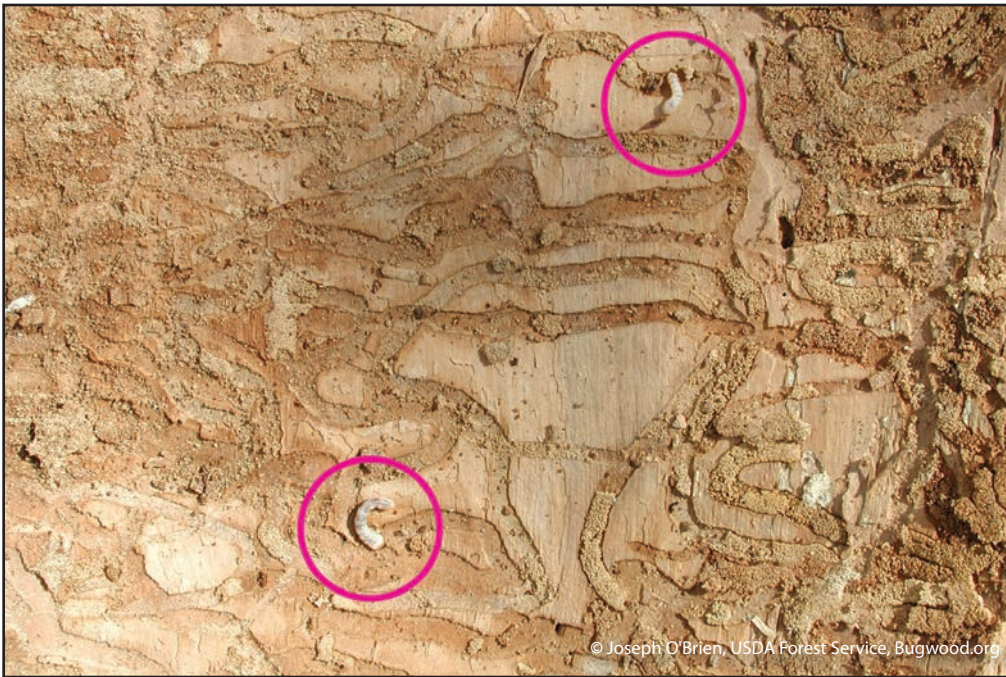
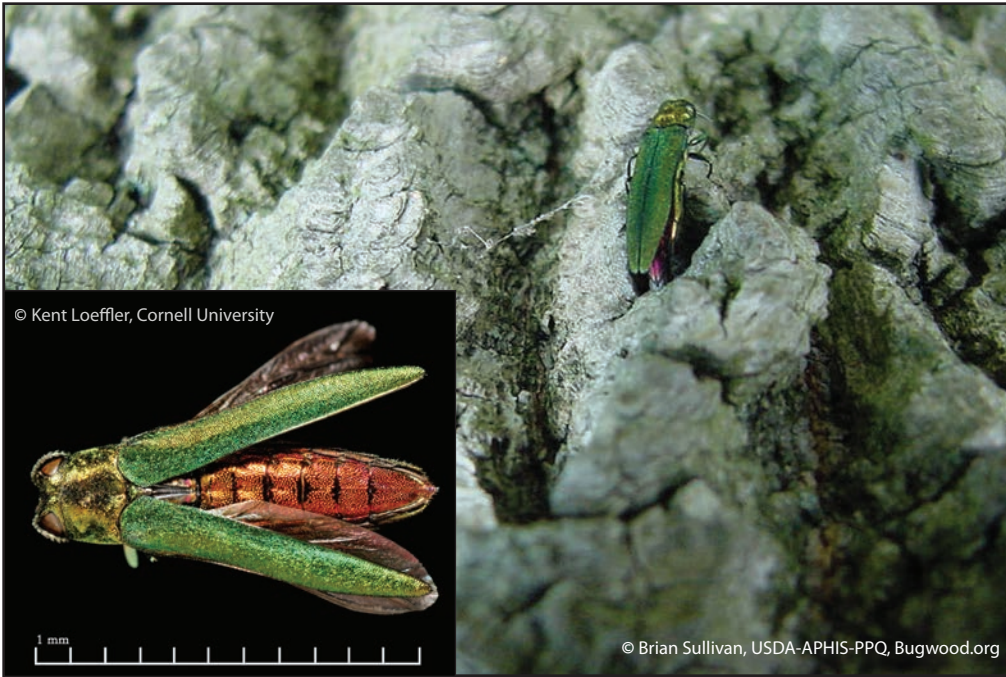


Emerald Ash Borer, *Agrilus planipennis*



Symptoms and signs of emerald ash borer. Clockwise from top left: Crown dieback and thinning. Early bark splitting. Late bark splitting revealing galleries beneath. Epicormic shoots or suckering. Woodpecker damage (3).



Symptoms and signs of emerald ash borer. Clockwise from top left: Adult emerald ash borer (EAB), *Agrilus planipennis*. Different instars of larvae. D-shaped exit holes. EAB galleries with larvae. *For more information visit www.firstdetector.org*