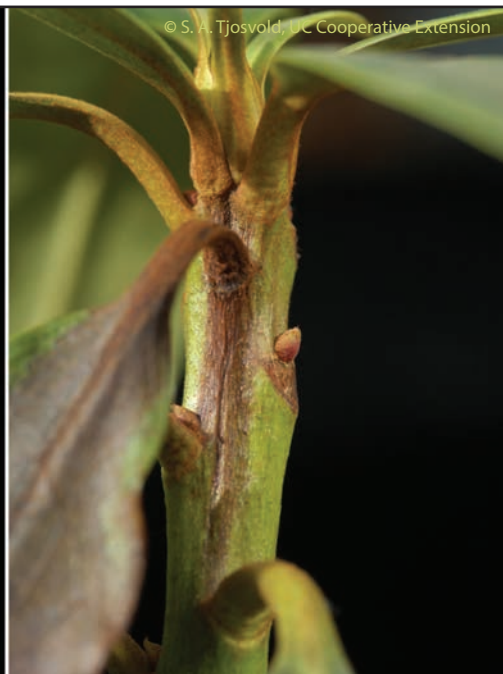


# Ramorum Blight, *Phytophthora ramorum*—symptoms on common landscape plants



**Clockwise from top left:** foliar discoloration is common where water collects on the leaf, often at leaf tips (California bay, images 1–2); necrosis along midrib; lesions penetrate leaf—identical pattern front/back; leaf symptoms prominent where water collects (rhododendron, images 3–6).



**Clockwise from top left:** leaf infection spreads along petiole into stem forming a canker (rhododendron); foliar symptoms on camellia; on kalmia; on andromeda; tip blight on viburnum; foliar discoloration on Japanese larch; wilting which leads to twig blight (Douglas fir).  
*For more information on ramorum blight visit [www.suddenoakdeath.org/](http://www.suddenoakdeath.org/).*